

EXPLORE materials



Materials in this kit:

- Scissors
- Masking tape
- Hole punch
- Rubber bands
- Washi tape
- Yarn
- Pipe cleaners
- Glue stick
- Brads (metal clasps)

What materials can you find and use from around the house?

- recycled paper, cardboard, packaging
- natural materials: sticks and twigs, rocks and leaves
- an old blanket or bed sheet



What is SHELTER?

GET INSPIRED

What do you think makes a shelter?
 What do these shelters have in common?
 How are they different?

Lean-to



Nest (To find out how Roz builds a shelter for Brightbill check out page 83!)



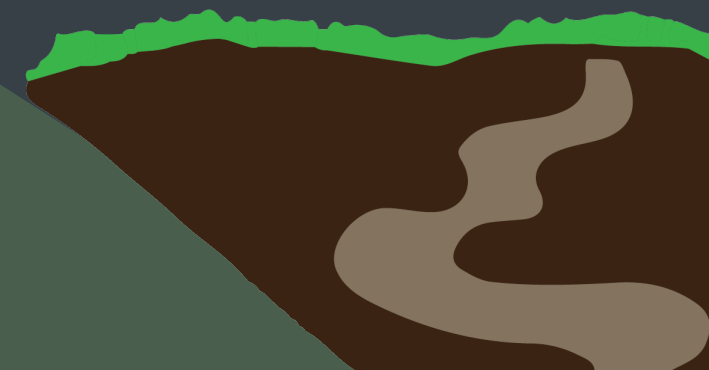
Apartment



Tent



Underground tunnel



RE-DESIGN



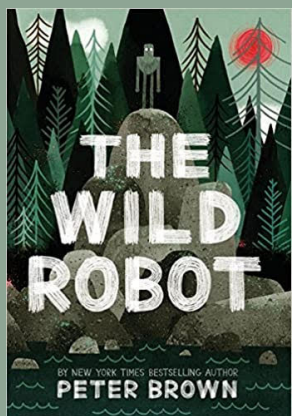
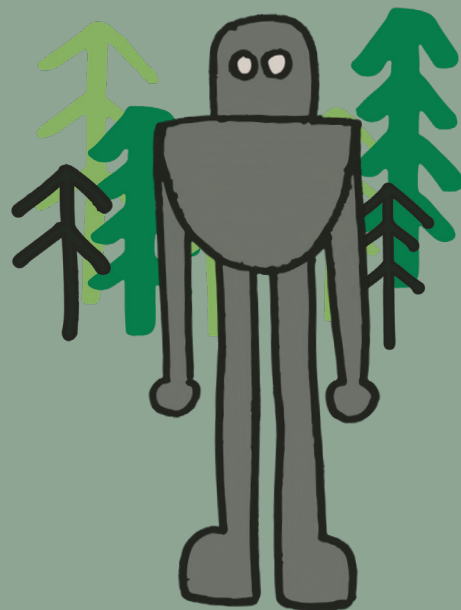
Imagine if...

- ...it got really hot or really cold—how would you change your shelter?
- ...a big storm came through; would your shelter survive?
- ...there was a fire! How would you rebuild or change your design? (go back to page 185 to find out how Roz rebuilds after a fire)



GET STARTED

How can I get inspired from *The Wild Robot* to design and build different shelters?



Written & Illustrated by: Peter Brown

In this story Roz learns the importance of repair, friendship, and adapting to the circumstances.

Roz relies on her friends and survival instincts to build shelter over and over again. In this kit you will find materials to design and construct shelter. Who might you build for (yourself? Brightbill? (the gosling that Roz the robot adopts) A friend?)

Let's get started!

SHARE YOUR THINKING!

- Text us at 510-343-6810. Send us a photo of you and your shelter and tell us what you're curious about! Include your name and school. We will feature it on social media and enter you into a **raffle drawing to win more art supplies!** (By sending us your picture you are giving Agency by Design Oakland permission to use it on social media.)
- Imagine If...is a thinking routine developed by the Agency by Design research project. Here it has been adapted; check out the original at <http://agencybydesign.org>



Agency by Design Oakland